



iSeries Vehicle Generators

with Variable Speed Technology

The new Panda iSeries-Generators are the first of the next generation of compact, super silent and powerful generators from Fischer Panda.

Using modern diesel engines which meet the latest emission standards and variable speed technology, the operating speed can be adjusted to match the load to ensure an efficiency while supplying extremely stable voltage and frequency.

The 4 kW 5000i generator can easily start an air conditioner with 24000 BTU. Fischer Panda iSeries-Generators are fitted with a highly regarded sound insulation and are water-cooled. The Panda iSeries-Generators have been especially designed to be light and compact.

- Variable speed - load-dependent
- Small size and low weight - compact installation
- Highly efficient - maximum energy

- 230V AC output - reliable power supply
- Pure sinus wave is ideal for computers and communications
- High starting capacity for air conditioners and pumps

- Easy to install - lower costs
- Environmentally friendly - lower fuel consumption
- Also suited for installations with stationary applications - energy for off-grid homes and remote locations



Perfect Power



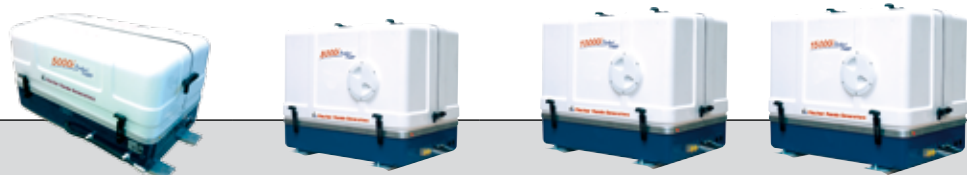
Panda iControl Panel



Fischer Panda[®]

Power wherever you are[™]

Click on the photo and get more info on our website



Generator					
Model		Panda 5000i PVMV-N	Panda 8000i PVMV-N	Panda 10000i PVMV-N	Panda 15000i PVMV-N
Approx. Dimensions (LxWxH)	[mm]	770 x 450 x 430	760 x 515 x 610	790 x 516 x 610	885 x 515 x 625
Weight	[kg]	120	173	195	220
Sound level (7m / 3m / 1m)	[dB]	53 / 63 / 68	52 / 62 / 67	52 / 62 / 67	54 / 64 / 68
Cooling System		Single circuit - freshwater cooling with external radiator			
Performance					
Nominal Output	[kW]	0-4 kW (5kVA)*	0-6.4 kW (8kVA)**	0-8.0 kW (10kVA)*	0-12.0 kW (15kVA)*
Continuous Output	[kW]	0-3.5 kW *	0-5.8 kW **	0-7.2 kW *	0-10.8 kW *
Voltage Stability	[%]	230 V ± 3%	230 V ± 3%	230 V ± 3%	230 V ± 3%
Frequency Stability	[%]	50 Hz ± 2%	50 Hz ± 2%	50 Hz ± 2%	50 Hz ± 2%
Voltage Regulation		electronic	electronic	electronic	electronic
Frequency Regulation		electronic	electronic	electronic	electronic
Control					
Starter System		12V, electric	12V, electric	12V, electric	12V, electric
Autostart		integrated	integrated	integrated	integrated
Remote Control Panel		Panda iControl2 with digital display			
Inverter		Panda PMGi 5000	Panda PMGi 8000	Panda PMGi 10000	Panda PMGi 15000
Inverter Weight		10.1 kg	12.3 kg	12.3 kg	17.4 kg
Inverter Dimensions		391 x 210 x 142	360 x 254 x 198	337 x 251 x 202	443 x 250 x 225
Engine					
Engine Manufacturer		Kubota	Kubota	Kubota	Kubota
Engine Type		EA 300	Z482	Z602	D902
Engine Displacement	[ccm]	309	479	599	898
Speed	[rpm]	2200 - 2800	2200 - 2800	2200 - 2800	2200 - 2800

Disclaimer: The information contained here is to the best of our knowledge accurate at the date of publication. All products are subject to continuous development and Fischer Panda GmbH reserves the right to alter technical specifications without prior notice.

*) cosPhi 0,8 up to 40°C ambient temperature, other cosPhi 1 up to 50°C

**) cosPhi 0,8 up to 40°C ambient temperature, other cosPhi 1 up to 45°C



Fischer Panda GmbH
 Otto-Hahn-Str. 40 • 33104 Paderborn, Germany
 Telephone +49 (0) 52 54 / 9202-0 • Telefax +49 (0) 52 54 / 9202-550
 E-Mail: info@fischerpanda.de
www.fischerpanda.net

Contact your Fischer Panda dealer for more information:

